

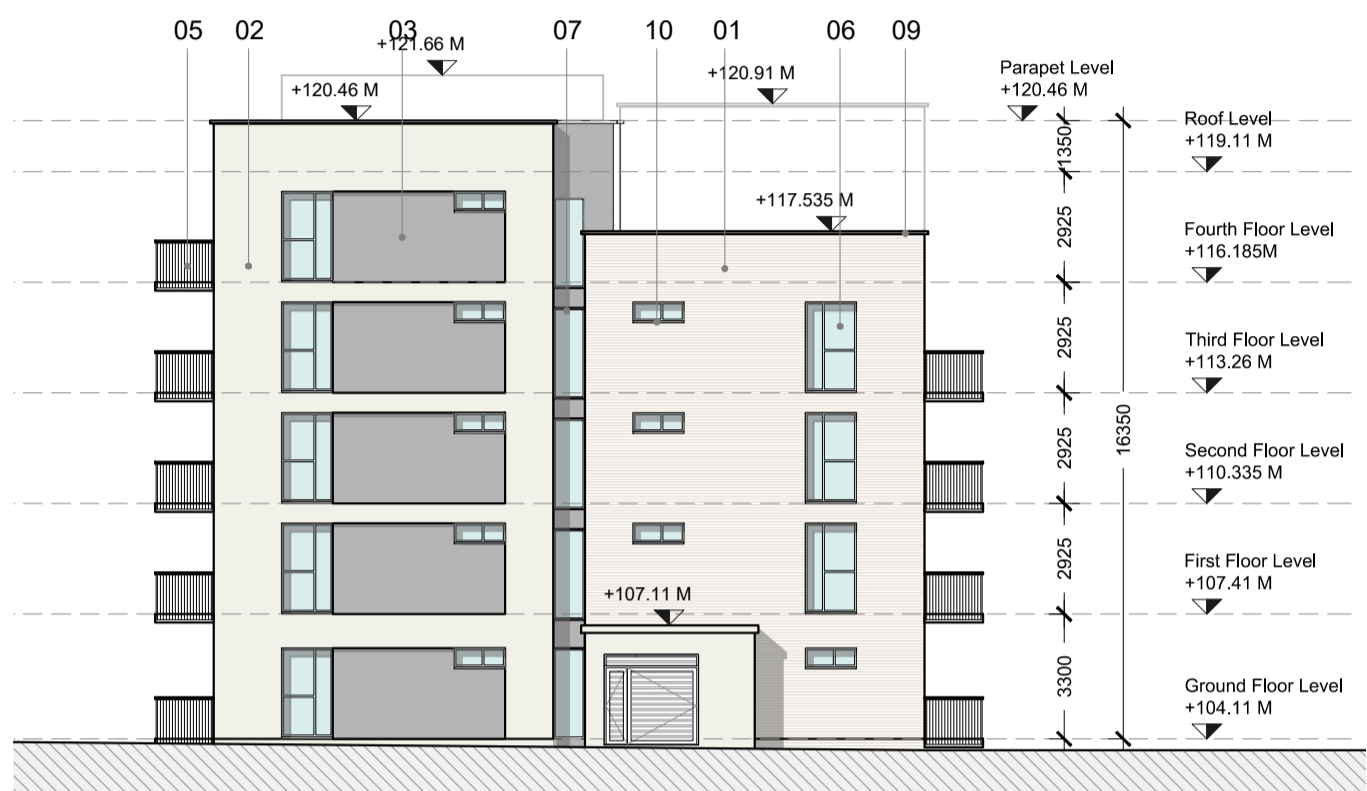
GENERAL NOTES

1. COPYRIGHT RESERVED
2. DO NOT SCALE DRAWING. USE FIGURED DIMENSIONS ONLY.
3. ALL DISCREPANCIES TO BE REPORTED TO ARCHITECT
4. THE CONTRACTOR IS RESPONSIBLE FOR CHECKING ALL LEVELS AND DIMENSIONS.
5. ALL STRUCTURE TO BE TO STRUCTURAL ENGINEERS DETAILS.
6. ALL MECHANICAL SERVICES TO SERVICES ENGINEERS DETAILS.
7. ALL PROPRIETARY ITEMS TO BE INSTALLED IN ACCORDANCE WITH MANUFACTURERS INSTRUCTIONS.
8. CONTRACTOR IS RESPONSIBLE FOR THE COORDINATION OF STRUCTURE FINISHES AND SERVICES.

REV	DATE	DESCRIPTION	BY

Material legend

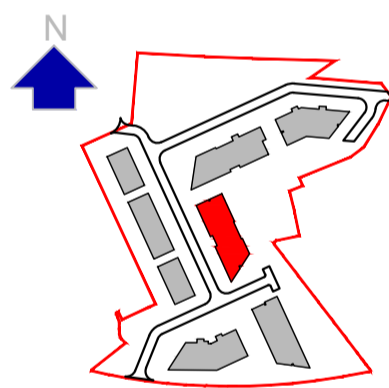
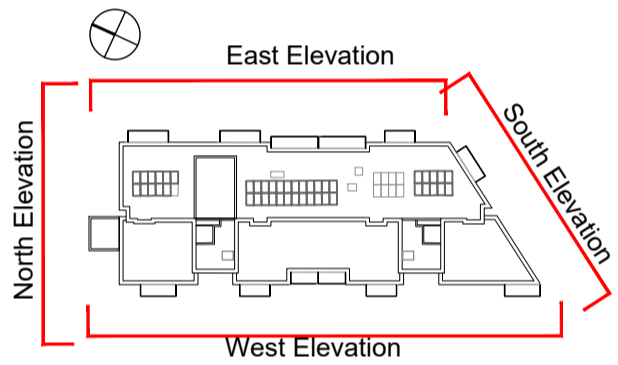
1. Selected brick finish
2. Selected render finish
3. Spandrel cladding to selected colour
4. Selected metal cladding
5. Steel balconies with steel guarding
6. Double glazed windows/ doors/ screens to selected colour
7. Selected light weight aluminium glazing system with spandrel panels
8. Louvred privacy screen
9. Aluminium capping to parapets
10. Pressed aluminium sills to selected powder coated RAL colour



Block C_ North Elevation
Scale 1:200 @ A1



Block C_ West Elevation
Scale 1:200 @ A1



Keyplan



Block C_ South Elevation
Scale 1:200 @ A1



Block C_ East Elevation
Scale 1:200 @ A1



**JOHN FLEMING
ARCHITECTS**

The Tree House
17 Richview Office Park, DUBLIN 14.
T: (01) 6689888 E: info@jfa.ie W: www.jfa.ie

CLIENT
Ardstone Homes Ltd.

PROJECT
White Pines East SHD
Stocking Ave

DRAWING
Apartment Block C
Elevations

SCALE
1:200@A1
JOB NO.
1941
DRAWN BY
OC
DATE
March 2021
DRAWING NUMBER
WPE - JFA - EL - AC - DR - A- P4003
REVISION

DRAWING LOCATION
w:\19 jobs\1941\03-planning\31 planning
apartment\31.2\wpe-fleming

DRAWING STATUS
Planning

